

\* Revision \*

(1)

**VEDANT PUBLIC SCHOOL**  
ISANPUR, AHMEDABAD - 382443.

Seat No. :  
બેઠક નંબર :

EXAM :  
પરીક્ષા : FA 4.

DATE :  
તારીખ : (2018-'19)

STD. / CLASS :  
ધોરણ / વર્ગ : 5<sup>th</sup>

SUBJECT :  
વિષય : Maths

MAIN મુખ્ય પુસ્તકો 1 + Supplements પુસ્તક પુસ્તકો \_\_\_\_\_ = TOTAL કુલ \_\_\_\_\_

Supervisor's Sign.  
નિરીક્ષકની સહી

Examiner's Sign.  
પરીક્ષકની સહી

Ques. No.	Total Marks	Marks Obtain
1		
2		
3		
4		
5		
6		
7		
8		
TOTAL		

Write From Here / અહીંથી લખવું.

ch- 3,4

Question 1.

MCQs.

Ch. 3

1) a.m. stands for ante meridiem.

2) p.m. stands for Post meridiem.

3) 1 day = 24 hours.

4) Quarter to 10 = 15 minutes to 10.

5) 1 hour = 60 minutes.

(1)

$$\square + \square + \square + \square + \square = \square$$

- 6) 8:15 in word is written as Quarter Past eight.
- 7) 1 year = 52 complete weeks.
- 8) Rehan gets up at 6:00 am.
- 9) The time 4 and a half hours before 2:20 p.m is  
 a) 10:30 am                      b) 9:40 a.m.  
c) 9:50 pm                      d) 12:20 pm
- 10) A singing show began at 8:35 pm and it lasted for 40 minutes. At what time did the singing show end?  
 a) 9:00 pm                      b) 9:05 pm  
c) 9:15 pm                      d) None of these
- 11) 1 century = 100 years.
- 12) How many complete weeks are there in a leap year?  
 = 52
- 13) The number of seconds in a year = 365 x 24 x 3600

## [ch-4]

- 14) A line has no end points.
- 15) A line segment has two end points.
- 16) A line segment can be measured.
- 17) A ray can be extended only in one direction.
- 18) A line is a straight path of points which can be extended to any length on both sides.
- 19) The end point on the ray is called its initial point.
- 20) A Plane has no boundary.
- 21) A ray is a part of line.
- 22) A line segment has a definite length.
- 23) The rays forming  $\angle ABC$  are  $\overrightarrow{BA}$  and  $\overrightarrow{BC}$

$$\square + \square + \square + \square + \square = \square$$

24) Which type of angle has measure that is smaller than a right angle? Acute

25) A straight angle is divided into  $\angle 1$  and  $\angle 2$ . If  $\angle 1$  measures  $120^\circ$ , then  $\angle 2$  measures  $60^\circ$ .

### Question 2

Do as directed. (1 mark each)

\* Convert the following into minutes.

1) 6 hours  
( $6 \times 60$ ) minutes  
 $= 360$  minutes.

2) 9 hours  
( $9 \times 60$ ) minutes  
 $= 540$  minutes

3) 7 hours 15 minutes.  
( $7 \times 60$ ) minutes + 15 minutes  
 $420$  minutes + 15 minutes.  
 $= 435$  minutes.

4) 10 hours 20 minutes.  
( $10 \times 60$ ) minutes + 20 minutes  
 $600$  minutes + 20 minutes  
 $= 620$  minutes.

[ ] + [ ] + [ ] + [ ] + [ ] = [ ]

\* Convert the following into seconds

- 1) 7 minutes. (7 x 60) seconds = 420 seconds
- 2) 10 minutes (10 x 60) seconds = 600 seconds

- 3) 15 minutes 10 seconds (15 x 60) seconds + 10 seconds = 900 seconds + 10 seconds = 910 seconds.

- 4) 20 minutes 30 seconds (20 x 60) seconds + 30 seconds = 1200 seconds + 30 seconds = 1230 seconds.

\* Convert the following into hours:

- 1) 6 days (6 x 24) hours = 144 hours.

$$\begin{array}{r} 2 \\ 24 \\ \times 6 \\ \hline 144 \end{array}$$

- 2) 9 days (9 x 24) hours = 216 hours

$$\begin{array}{r} 3 \\ 24 \\ \times 9 \\ \hline 216 \end{array}$$

- 3) 2 days 16 hours (2 x 24) hours + 16 hours = 48 hours + 16 hours = 64 hours

$$\begin{array}{r} 24 \\ \times 2 \\ \hline 48 \end{array}$$

$$\square + \square + \square + \square + \square = \square$$

\* Convert as directed.

1) 8 weeks into days.

$$8 \times 7 \text{ days} \\ = 56 \text{ days}$$

2) 3 months into days

$$3 \times 30 \text{ days} \\ = 90 \text{ days}$$

3) 6 years into months

$$6 \times 12 \text{ months} \\ = 72 \text{ months}$$

\* Convert into minutes.

1) 240 seconds

$$(240 \div 60) \text{ minutes.} \\ = 4 \text{ minutes.}$$

2) 480 seconds

$$(480 \div 60) \text{ minutes} \\ = 8 \text{ minutes.}$$

3) 540 seconds

$$(540 \div 60) \\ = 9 \text{ minutes.}$$

\* Convert into hours.

$\square + \square + \square + \square + \square = \square$

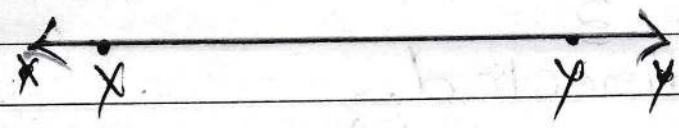
1) 180 minutes.  
(180 ÷ 60) hours  
= 3 hours.

2) 720 minutes  
(720 ÷ 60) hours  
= 12 hours

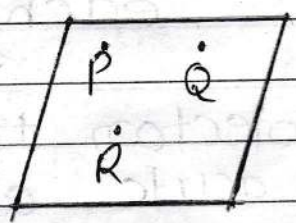
3) 900 minutes  
(900 ÷ 60) hours  
= 15 hours

\* Draw and label the following figures in your notebook.

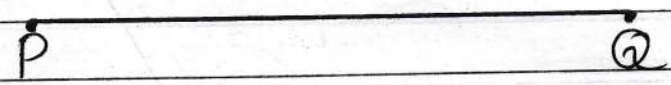
1) Line xy.



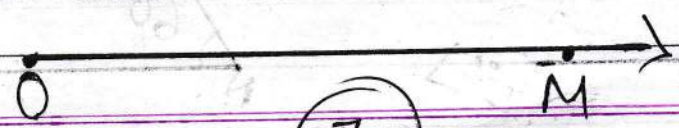
2) Plane PQR



3) Line segment PQ



4) Ray OM



8

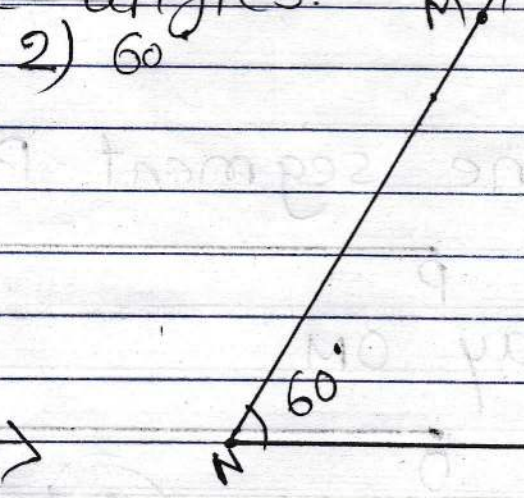
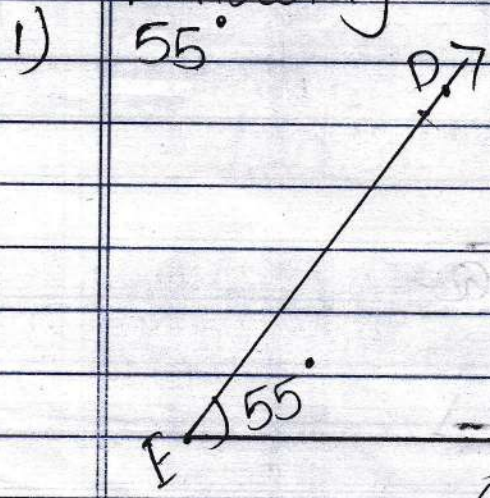
+  +  +  +  =

\* classify each of the following angles as acute, obtuse or right angle.

- 1)  $55^\circ =$  acute angle
- 2)  $90^\circ =$  right angle
- 3)  $130^\circ =$  obtuse angle
- 4)  $70^\circ =$  acute angle
- 5)  $100^\circ =$  obtuse angle

Question 3.  
Do as directed.  
(9 marks each)

\* Use a protector to draw the following acute angles.



8



# VEDANT PUBLIC SCHOOL

ISANPUR, AHMEDABAD - 382443.

Seat No. :  
બેઠક નંબર :

EXAM :  
પરીક્ષા :

DATE :  
તારીખ :

STD. / CLASS :  
કોચ / વર્ગ :

SUBJECT :  
વિષય :

MAIN 1 + Supplements = TOTAL  
મુખ્ય પુસ્તક 1 + પુસ્તક પુસ્તક = કુલ

Supervisor's Sign.  
નિરીક્ષકની સહી

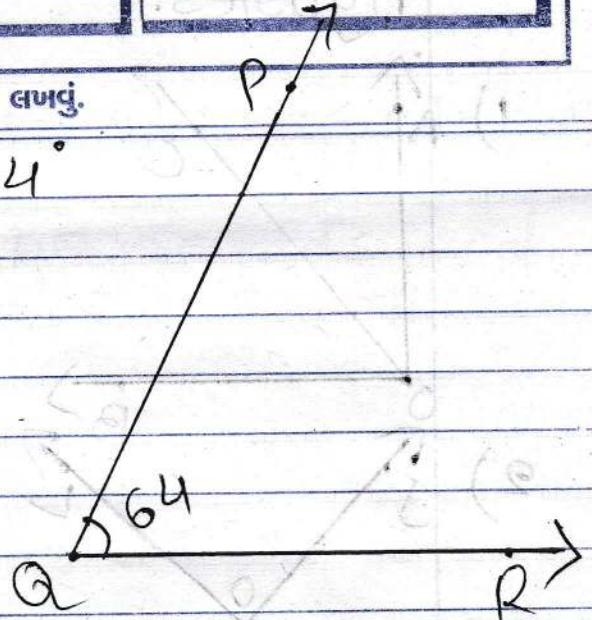
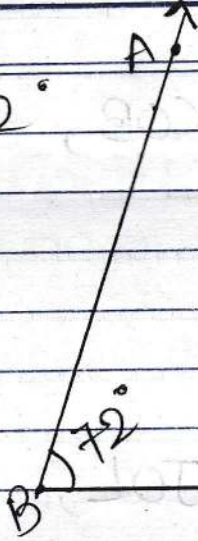
Examiner's Sign.  
પરીક્ષકની સહી

Ques. No.	Total Marks	Marks Obtain
1		
2		
3		
4		
5		
6		
7		
8		
TOTAL		

Write From Here / અહીંથી લખવું.

3)  $72^\circ$

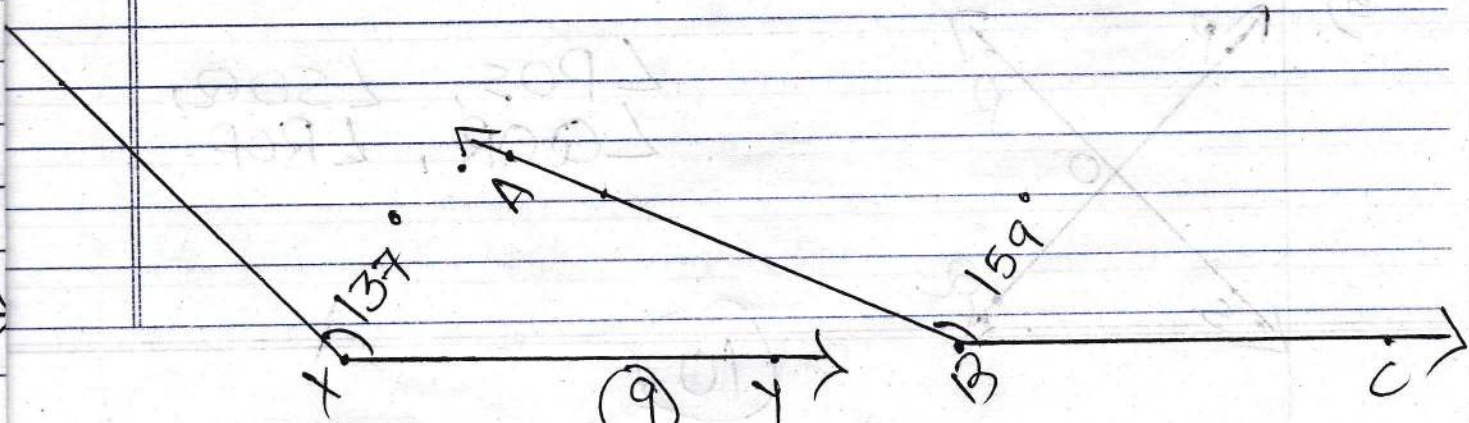
4)  $64^\circ$



\* Use a protector to draw the following obtuse angles.

1)  $137^\circ$

2)  $159^\circ$





[ ] + [ ] + [ ] + [ ] + [ ] = [ ]

\* Add.

- 1) 24 hours 9 minutes 8 seconds and 20 hours 39 minutes 40 seconds

H.	M.	S.
24	09	08
+ 20	39	40
<hr/> 44	<hr/> 48	<hr/> 48

= 44 hours 48 minutes 48 seconds

- 2) 6 hours 35 minutes 45 seconds and 5 hours 36 minutes 34 seconds.

H.	M.	S.
6	35	45
+ 5	36	34
<hr/> 11	<hr/> 71	<hr/> 79
+ 1	+ 1	
<hr/> <u>12</u>	<hr/> <u>72</u>	<u>60 + 19</u>
	<u>60 + 12</u>	

= 12 hours 12 minutes 19 seconds.

244  
221 244  
2415

(12)

□ + □ + □ + □ + □ = □

3) 25 minutes 45 seconds and  
40 minutes 36 seconds.

M.	S.
25	45
+ 40	36
<hr/>	<hr/>
65	81
+ 1	
<hr/>	
<u>66</u>	<u>60 + 21</u>

= 66 minutes 21 seconds

\* Subtract:

1) 30 minutes 40 seconds from  
39 minutes 28 seconds.

M.	S.	M.	S.
39-1	28+60	38	88
- 30	40	- 30	40
		<hr/>	<hr/>
		08	48

08 minutes 48 seconds.

(12)

□ + □ + □ + □ + □ = □

2) 8 hours 20 minutes 37 seconds from 10 hours 16 minutes 30 seconds.

H.	M.	S.
10-1	(16-1) <sup>+60</sup>	30+60
<u>-8</u>	<u>20</u>	<u>37</u>

H.	H	M.	S.
<del>10</del>	9	75	<del>90</del>
<u>-8</u>	<u>-8</u>	<u>20</u>	<u>37</u>
<u>2</u>	<u>1</u>	<u>55</u>	<u>53</u>

19 Hours 55 minutes 53 seconds.

3) 8 hours 48 minutes 26 seconds from 27 hours 58 minutes 30 seconds.

H.	M.	S.
27 <sup>17</sup>	58	30 <sup>10</sup>
<u>-8</u>	<u>48</u>	<u>26</u>
19	10	04

19 hours 10 minutes 04 seconds

221 321  
3215

□ + □ + □ + □ + □ = □

\* Solve the following.

1) A train was to leave at 8:15 pm  
It left 1 hour 90 minutes late.  
What time did it leave?

Hour	Minutes
8	15 pm
+ 1	90
9	105
+ 1	60 + 45
<u>10</u>	

10 : 45 pm

Train will leave at 10:45 pm

2) Ankur is 6 years 8 months old. His sister Aditi is 2 years 9 months elder to him. How old is she?

Years	months	
6	8	Ankur
2	9	Aditi
<u>8</u>	<u>17</u>	
+ 1	12 + 5	
<u>9</u>		

14

15

$$\square + \square + \square + \square + \square = \square$$

Aditi is 9 years 5 months old.

All The Best.

15